



губ

ORRFIAT

УДЛИНИТЬ НА 13 СМ

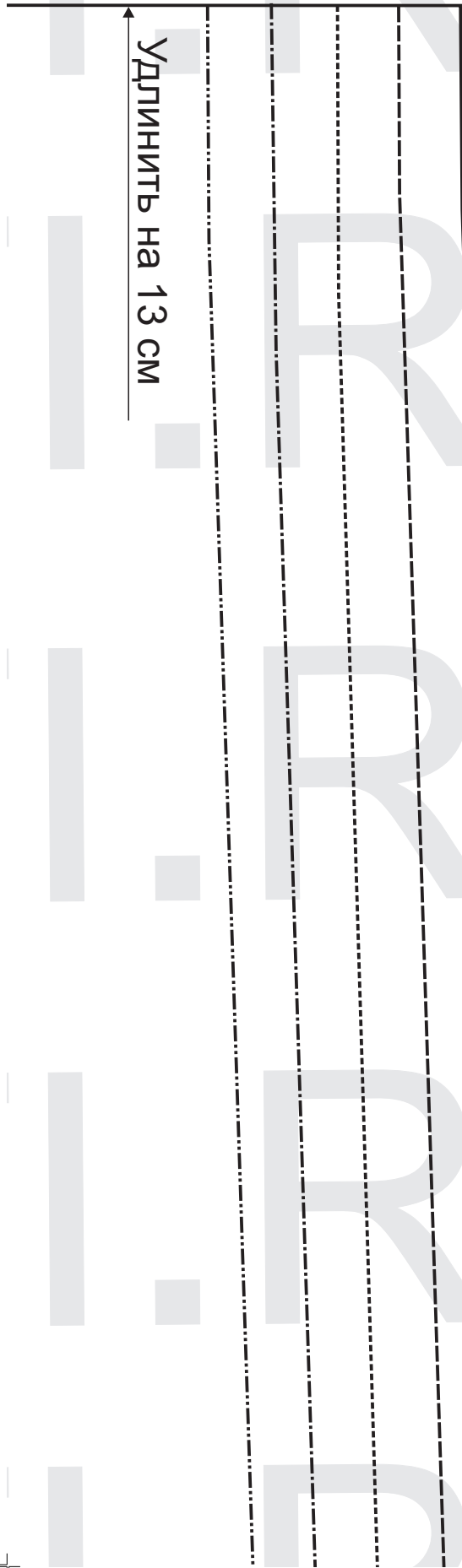
ORRFIAT

ORRFIAT

ORRFIAT

ORRFIAT

Удлиннить на 13 см



**Передняя  
половинка  
брюк**

Тестовый квадрат  
100x100 мм

# Линия стрелки

Долевая нл

This section contains large, light gray letters for tracing: 'С', 'I', 'V', 'E', and 'K'. Below these are several rows of tracing lines. The first row consists of solid lines forming a shape. The second row consists of dashed lines forming the same shape. The third row consists of dotted lines forming the same shape. The fourth row consists of solid lines forming a different shape. The fifth row consists of dashed lines forming the same shape. The sixth row consists of dotted lines forming the same shape. The seventh row consists of solid lines forming a different shape. The eighth row consists of dashed lines forming the same shape. The ninth row consists of dotted lines forming the same shape. The tenth row consists of solid lines forming a different shape. The eleventh row consists of dashed lines forming the same shape. The twelfth row consists of dotted lines forming the same shape.

C R F I A I

O R F I A T

O R F I A T

O R F I A T

O R F I A T

Линия стрелки



I . R U

I . R U

I . R U

I . R U

I . R U



# Юбка брюк размеров

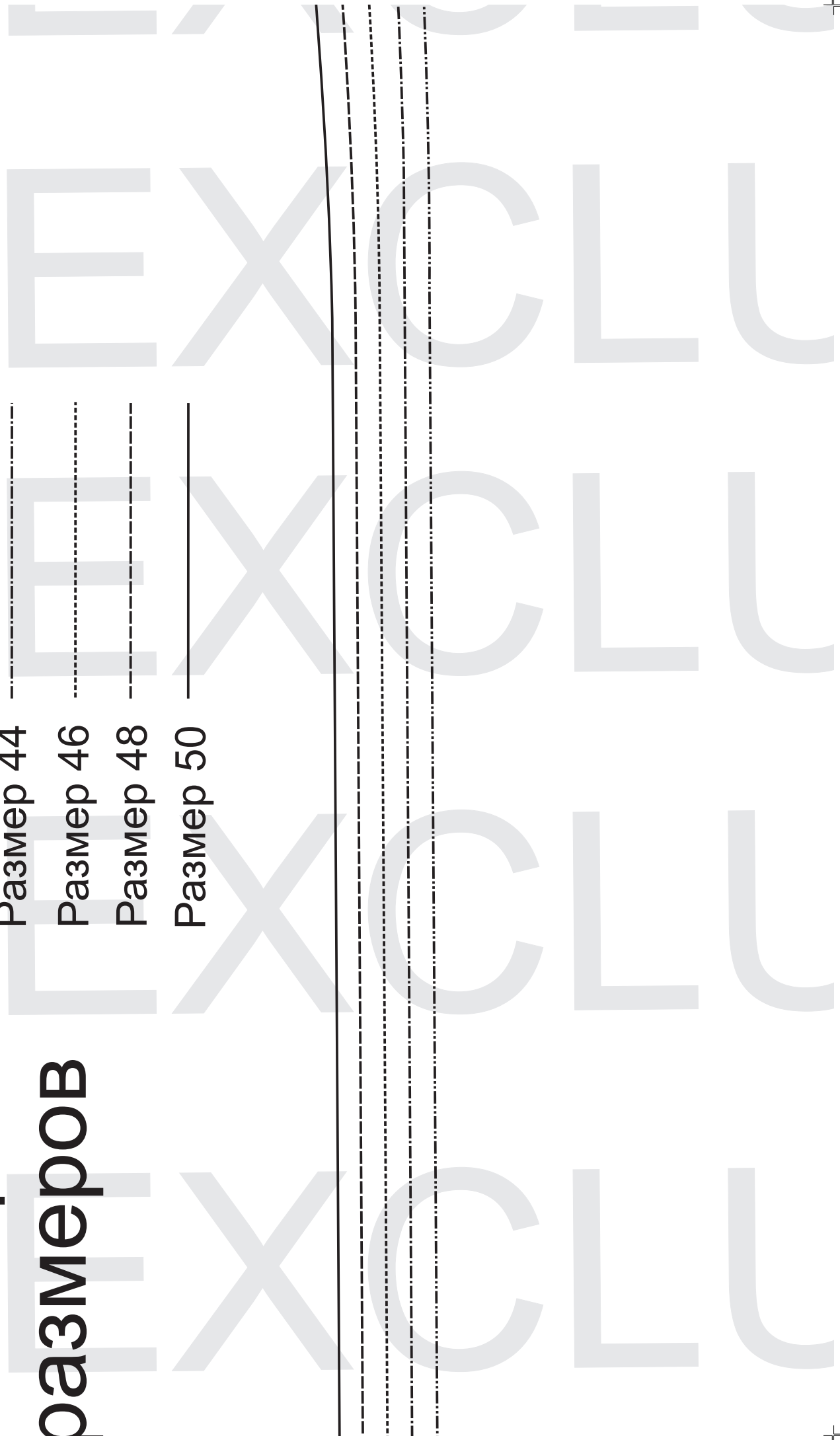
Размер 42

Размер 44

Размер 46

Размер 48

Размер 50

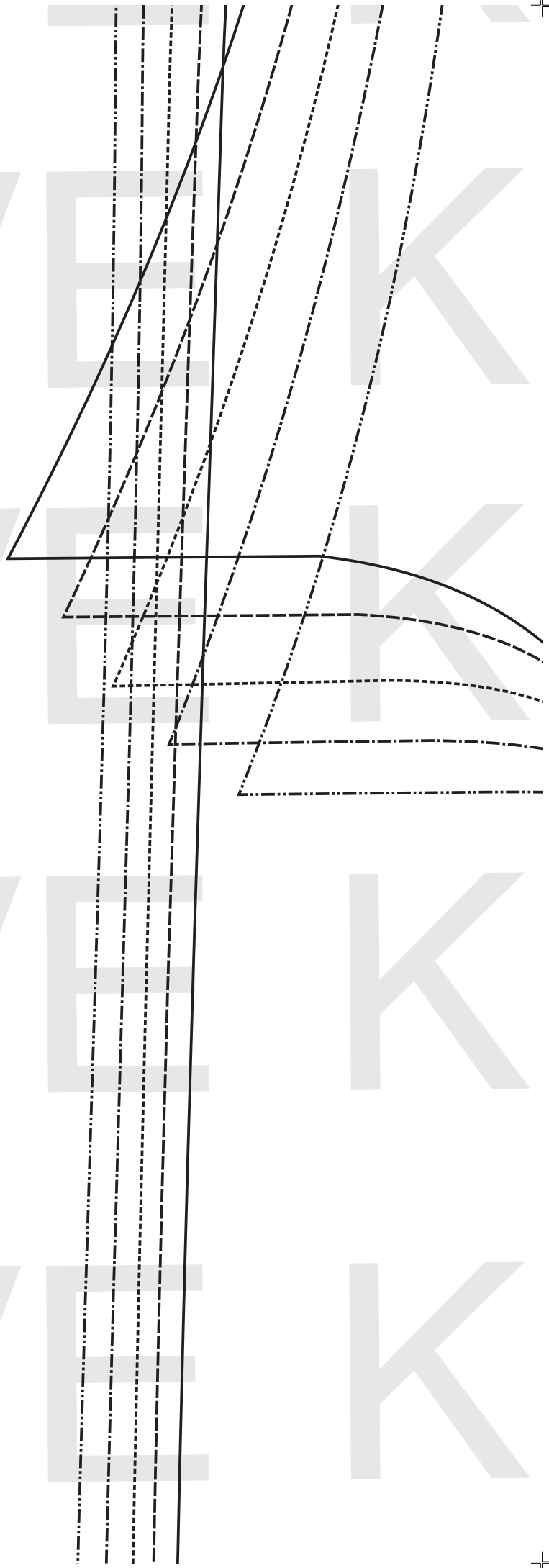


J S I V E E K

J S I V E E K

J S I V E E K

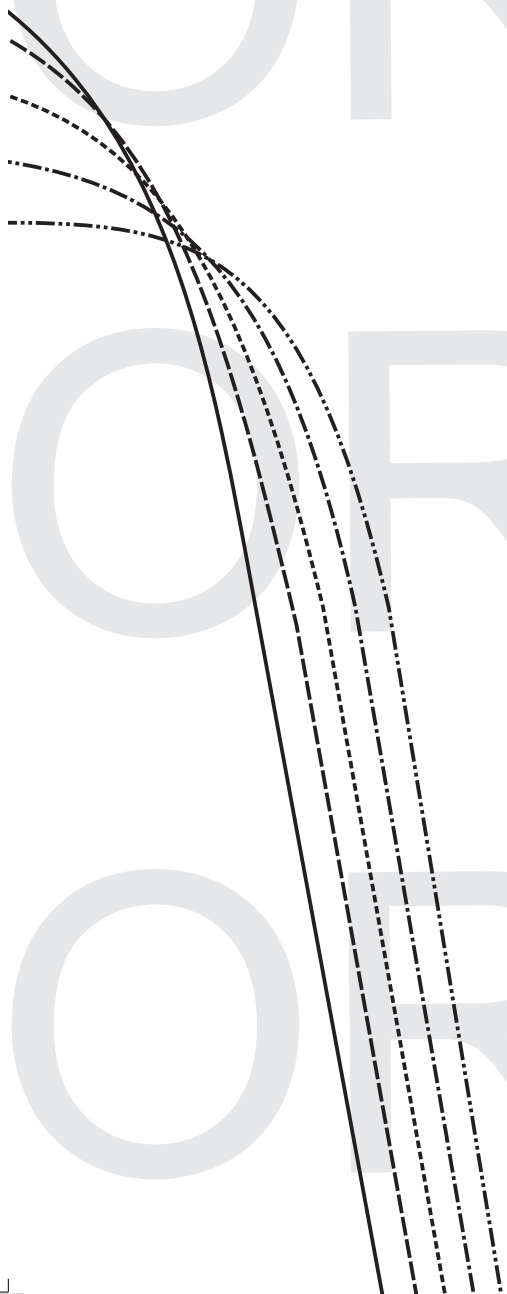
J S I V E E K



Задняя  
половинка  
брюк

Долговая нить

50  
48  
44  
42

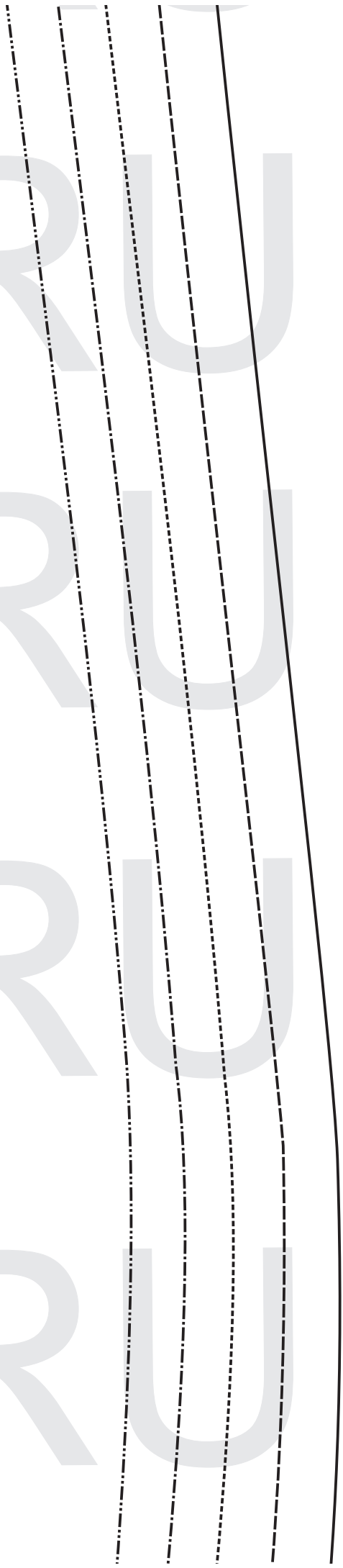


I. R. U

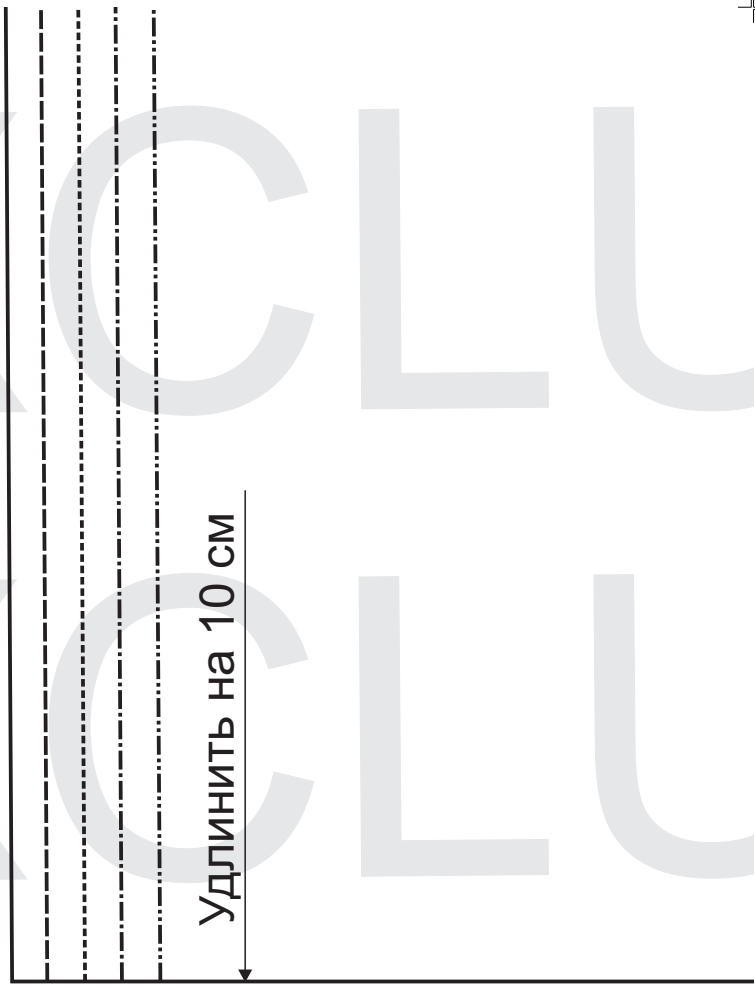
I. R. U

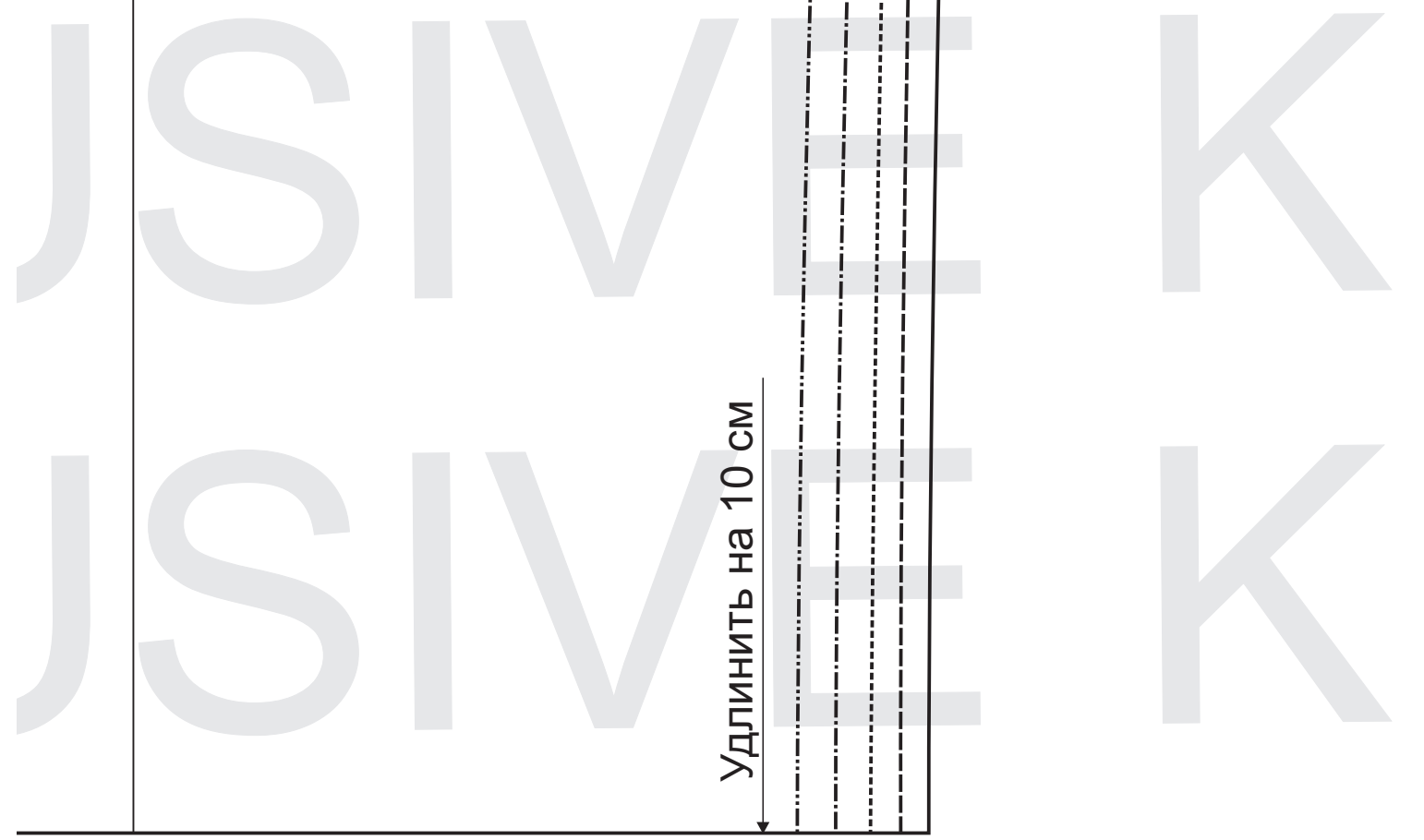
I. R. U

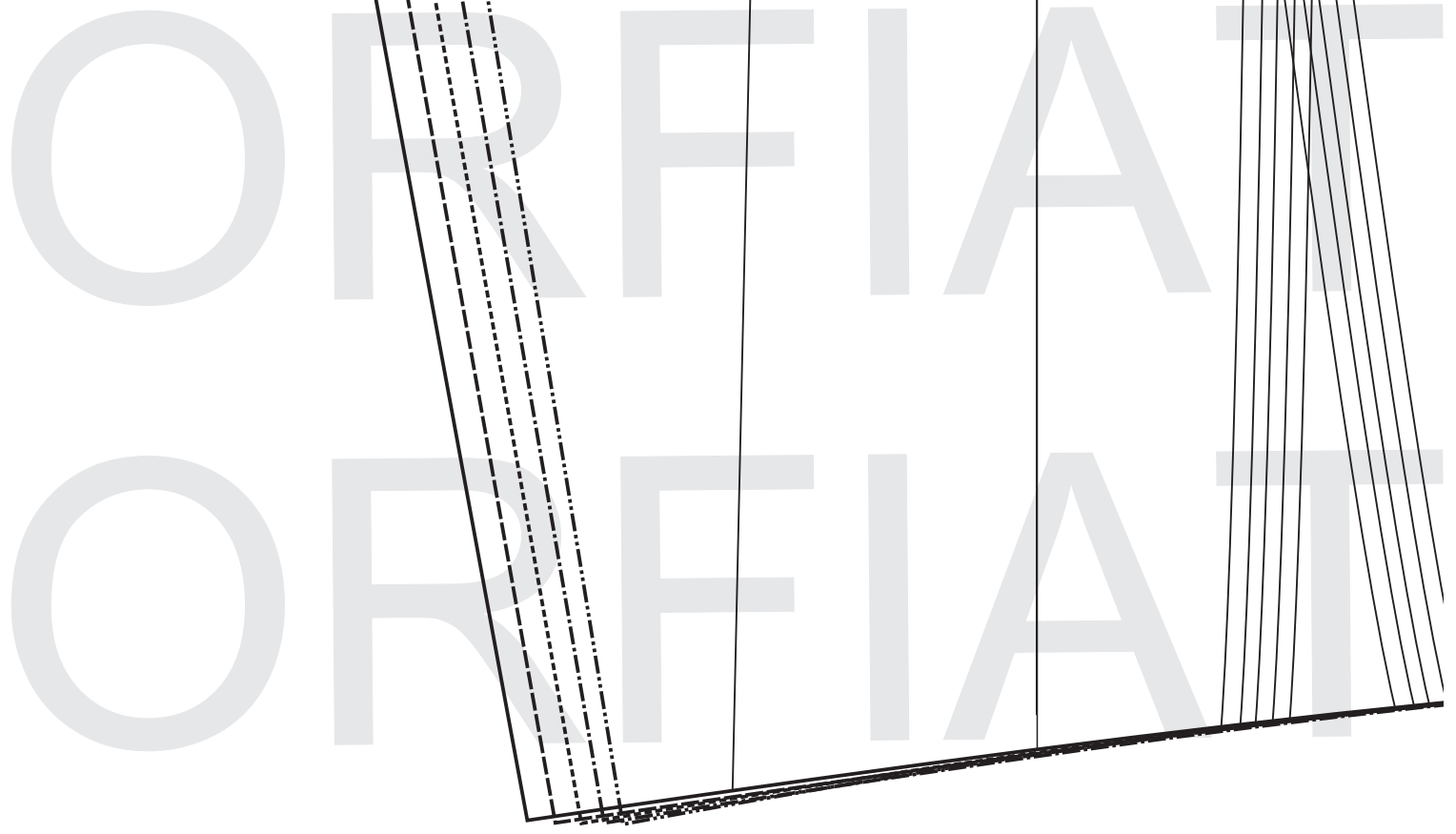
I. R. U



# Базовая выкройка на 5







(4, 4)

